



Traffic Management Products
Unit 6 Britannia Park, Trident Drive,
Wednesbury, West Mids. WS10 7XB

0208 744 8201

www.trafficmanagementproducts.co.uk



Alpha

LED Sign Light

Energy efficient illumination for traffic signs

Stronger, lighter and helps reduce carbon emissions on your network.

Completely redesigned and now entirely manufactured in the UK, the Alpha aluminium sign light has industry-leading power efficiency and will illuminate traffic signs up to 1200mm.

- Versatile mounting options
- Automatic dusk till dawn operation
- IP66 anti-vandal body
- 10 year warranty
- Power consumption of only 2.6 watts
- CMS compatible
- Zero maintenance

Built to withstand the harshest environments

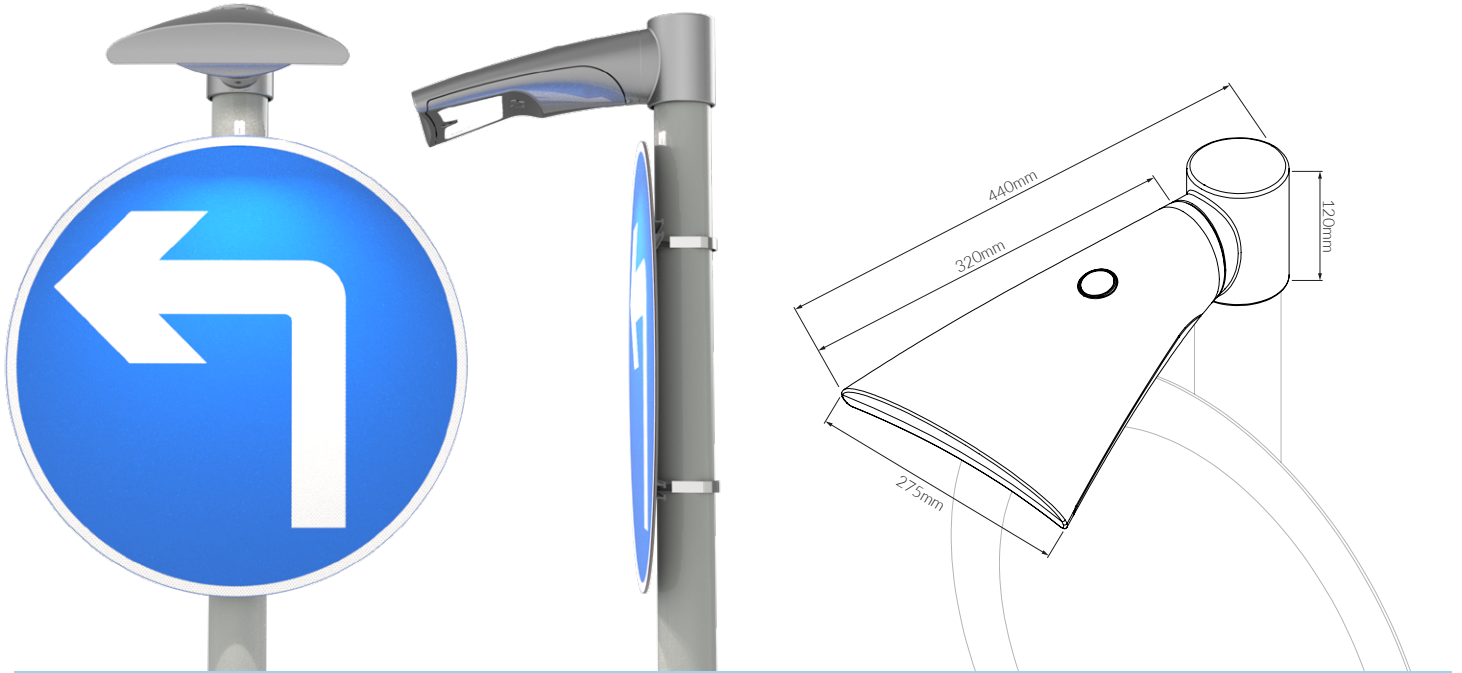
The Alpha is made from marine grade recycled aluminium that is powder coated in traffic grey as standard. The gear tray is encased in high impact polycarbonate, with vandal proof fixings. With easy access to all these components from the underside of the sign light, the Alpha can be installed in minutes.



The Alpha has a 10-year warranty, and once it has reached the end of its lifespan can easily be recycled.



Specifications



| | |
|-------------------------|--|
| Case Material | LM6 marine grade recycled aluminium |
| Ingress Protection | IP66 |
| Corrosive Resistance | SP1 |
| Colour | Powder coated grey (other colours available) |
| Lens Material | Polycarbonate |
| LED Gear Tray | 4 x 4w high efficiency LEDs |
| Photocell | As standard (100 lux) |
| Colour Rendering Index | RA60 |
| Operating Temperature | -25°C to +50°C |
| Nominal Life Expectancy | 50,000+ hrs |
| Voltage | 220 to 240V |
| Power Consumption | 2.6 w |
| Weight | 3.6kgs |
| Charge code | 42 0003 0000 100 (UMSUG) |
| Warranty | 10 years |
| Recyclable | Yes |

| Illumination | Sign Dia. | Brightness standard | Uniformity standard |
|--|-----------|---------------------|---------------------|
| Compliance as per Lighting standard BS EN 12899 pts. 1&2 | 600mm | E2 | UE3 |
| | 750mm | E2 | UE3 |
| | 900mm | E2 | UE2 |
| | 1200mm | E2 | UE2 |

Easy Installation

The Alpha is super quick to install with easy access to the anti-rotational fixings from underneath. The gear tray comes with a quick connect plug and socket. The Alpha is also available pre-wired for even faster installation.

Low Maintenance

Clean external surfaces with diluted mild detergent as required, paying special attention to the lens and photocell window.

Versatile mounting options

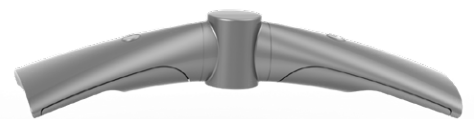
The Alpha can be mounted onto either 76mm or 89mm diameter posts, either as post top or mid post (TESPA). Single or double variants are available as seen below.



Single Post Top
76mm or 89mm Dia.



Mid Mount Bracket
TESPA Banding



Double Post Top
76mm or 89mm Dia.